





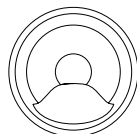
RHINO TUBS

WITH INTEGRATED HEATING SYSTEM

RHINO TUB

180 € 4999,-

Prijzen incl. BTW

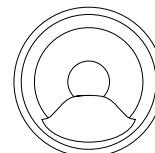


INTERNAL DIAMETER	180 cm
EXTERNAL DIAMETER	200 cm
HEIGHT	105 cm
WATER CAPACITY	1650 litres
HEATING	integrated wood stove
PEOPLE CAPACITY	6
AIR MASSAGE SYSTEM	15 jets

RHINO TUB

200 € 5799,-

Prijzen incl. BTW



INTERNAL DIAMETER	200 cm
EXTERNAL DIAMETER	220 cm
HEIGHT	100 cm
WATER CAPACITY	2000 litres
HEATING	integrated wood stove
PEOPLE CAPACITY	8
AIR MASSAGE SYSTEM	16 jets

Standaard kleur → geen meerkost



SHELL COLOR -
WHITE FROST

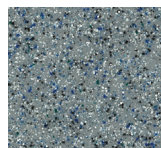
Standaard kleur → geen meerkost



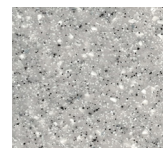
SHELL COLOR -
SHADOW GRAY

FIBERGLASS SHELL

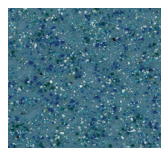
Our 7 layer shell concept came from long-term experience working in swimming pool production. Its design is innovative, ergonomic and most importantly – comfortable. The shell is produced from hand laminated fiberglass, finished with gelcoat. Its size is optimal for 6-8 persons use and it comes in a choice of colour – grey or white.



3D COLOR SHELL
NAVY PEARL



3D COLOR SHELL
QUARTZ PEARL



3D COLOR SHELL
OCEAN PEARL



3D COLOR SHELL
BEACH PEARL

Geen standaard kleuren → meerkost € 499,-

Prijzen incl. BTW

HIDDEN FEATURE -

- Special generation 2 gelcoat is used for better durability and performance of the shell surface



WOOD BURNING HEATER



CHIMNEY WITH A PROTECTION



**AISI 316 STEEL STOVE WITH
4 MM BURNING CHAMBER WALLS**

Inclusief bij Rhinotub 180 & 200

INTEGRATED 30 KW HEATING SYSTEM

At Rhino Tubs we never compromise on quality, our 30 kW stainless steel stove made from AISI 316 steel. The burning chamber is produced from 4 mm steel to ensure the long life of the system, and comes complete with chimney protection and rain cap. The stove is equipped with an easy access valve for emptying the system.

HIDDEN FEATURE -

- AISI 316 grade steel supports the usage of pool chemicals and low levels of salt
- Chimney with a protection
- Integrated wood burning heater
- High flow drain tap



**SOFT RHINO TUB COVER -
DARK GRAY**



**SOFT RHINO TUB COVER -
BROWN**

Inclusief bij Rhinotub 180 & 200

RHINO TUB COVER

This cover was built to perform. An integrated support frame, high density EPS for thermal insulation, anti-algae vacuum protection, an ergonomic design, and a top quality fabric finish, this cover will withstand any conditions.

HIDDEN FEATURE -

- Anti-algae vacuum film protection comes as standard in all our covers



AISI 304 FRAME SYSTEM AS BASE

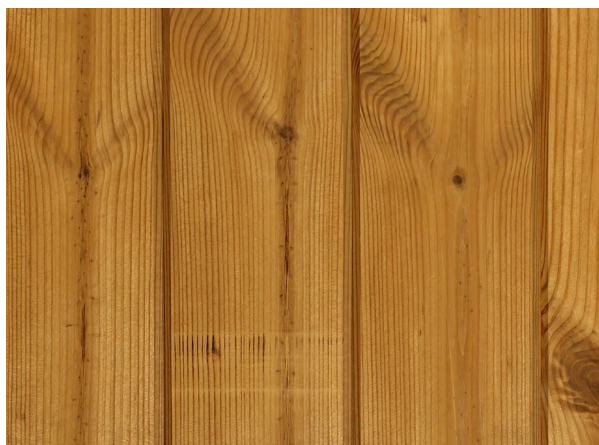
Inclusief bij Rhinotub 180 & 200

FRAME SYSTEM

The Rhino Tub is equipped with a structural AISI 304 stainless steel support cross underneath expanding the lifetime of the tub, wherever place it. This support also helps to level the tub during installation, maintaining an even footing throughout its life.

HIDDEN FEATURE -

- Special support pads are placed on the corners of the frame for easy levelling
- Stainless steel construction



**THERMO WOOD COLOR -
NATURAL OIL**

Inclusief bij Rhinotub 180 & 200

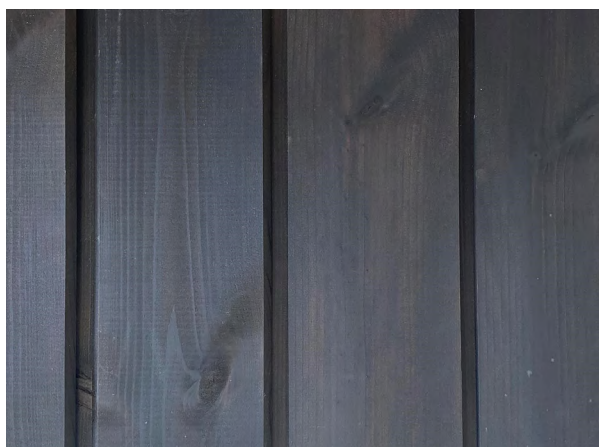
EXTERIOR WOOD FINISH

All of our tubs are covered with thermo wood, making them dimensionally stable, but still giving you sensation and smell of a real wood. Extra protection is provided by the paint overcoat, with natural and black finishes available.

Wooden steps and side minibar included.

HIDDEN FEATURE -

- High endurance steel bands are applied to all our tubs for added durability
- Thermowood in Black finish
- Thermowood in Natural color finish
- Mini bar



**THERMO WOOD COLOR -
BLACK FINISH**



**STEP ENTRANCE
FOR EASY ACCESS**



MINIBAR

SYSTEMS

All of our tubs are equipped with 6 massage jets powered by a 0,9 kW pump. These jets are ergonomically placed and their water supply system is optimized for best performance.

All systems are operated via easy access buttons on the side of the tub.

OPTIONAL - Our air massage system with 15 injection jets is powered by a 0,9 kW air blower.

OPTIONAL - A filtration system with glass media filter.
1 RGB LED light included.

HIDDEN FEATURE -

- Optimized custom built piping to maximize water and air systems



AIR MASSAGE SYSTEM

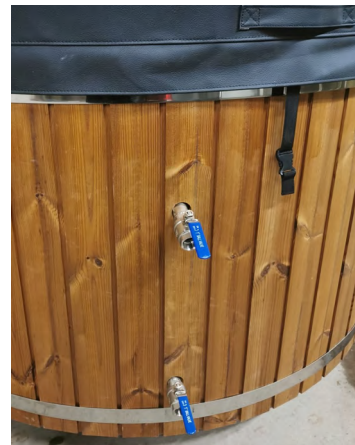
- Powered by 0,9 kW air blower, with 16 jets
- 180 cm Rhino Tub has 15 jets
- 200 cm Rhino Tub has 16 jets
- All systems operated with easy access buttons on the side of the tub

HIDDEN FEATURE - Optimized piping to maximize flow in water and air systems

Niet inclusief bij Rhinotub 180 € 599,-

Inclusief bij Rhinotub 200

Prijzen incl. BTW



FILTRATION KIT INCLUDES:

- Special inlet and outlet in the tub for connecting the system
- Wood cover (same color as the tub) to hide the equipment
- XPERT Top Filter system from ASTRAL with glass media filter, pump, multiport valve and electrical box with timer

HIDDEN FEATURE - Wood cover works perfect for snacks and drinks serving

Niet inclusief bij Rhinotub 180 & 200 € 889,-

Prijzen incl. BTW



WWW.RHINO-POOLS.COM